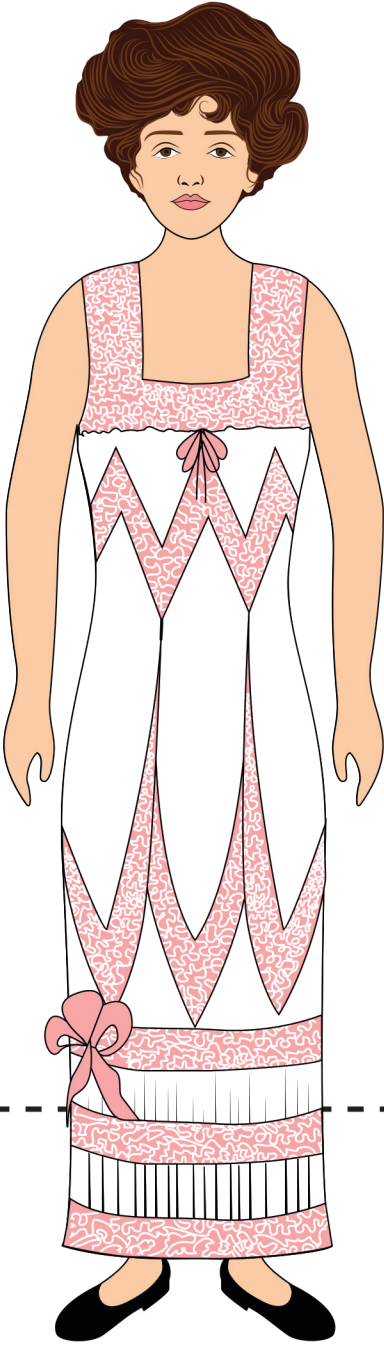


**Victoria
Claflin
Woodhull
1838-1927**



TO FIT HAT ON DOLL:

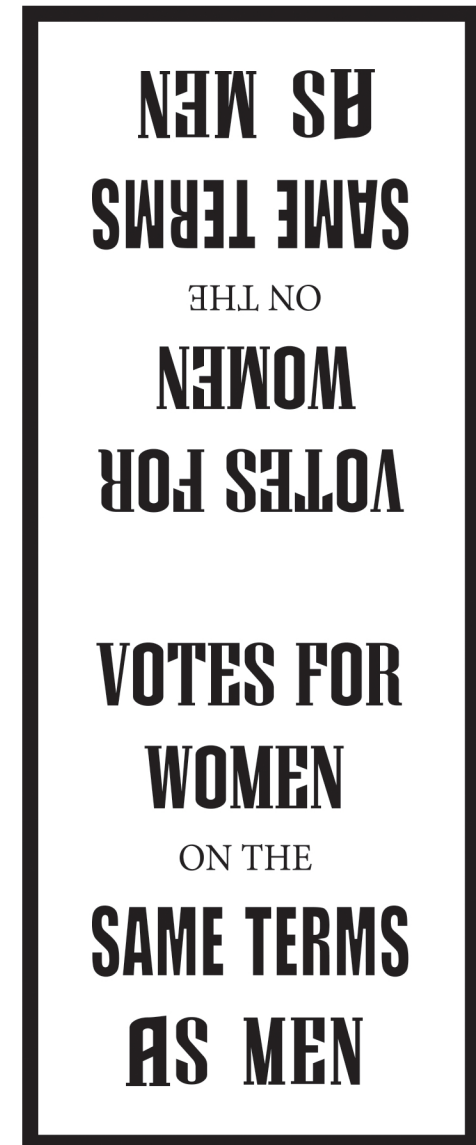


Cut along curved line
between 2 sets of
small yellow flowers

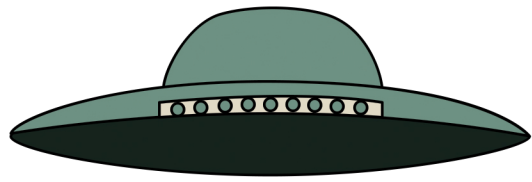
Victoria's marching
for suffrage dress
and hat.
Use with
march
background.



Cut out sign. Fold in half. Authentic
font. Use with suffrage march
clothes and background.

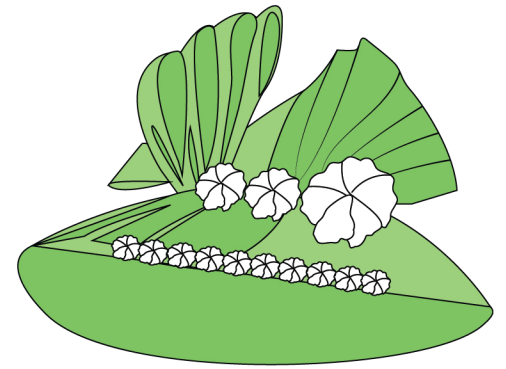


**TO FIT
HAT
ON DOLL:**



**Cut along black line under
bar of small green circles**

**Cut under line of
small white
flowers**



**Victoria's
Bicycling and
Evening
Outfits.
Matching
Hats.**

